

KT-KD61A

vMix SLOW MOTION INSTANT REPLAY

Two-color colorful crystal buttons

T-type speed control handle

Bidirectional communicate with mainstream software

4-level variable-speed jog shuttle

Broadcast-grade multi-channel A/B source switching

Multiple control Interfaces



FEATURES

■ Slow motion replay:

Support quickly set in-points (IN) and out-points (OUT) for the connected camera positions. The in-point marks the start, and playback begins at the out-point.

■ 4-Level searchable jog shuttle design :

4-level adjustable variable-speed video content search jog shuttle design, integrated with in and out point buttons for accurate frame marking and extraction.

■ High quality aluminum alloy T-BAR fader :

Aluminum alloy high-quality T-BAR fader , combined with LED light progress bar, employs a multi-point calibration algorithm for precise field-based adjustments and control.

■ Precision-machined aluminum alloy enclosure :

Integrated USB and power supply architecture with a CNC-machined aluminum alloy chassis.

■ 49-way dual-color crystal transparent buttons :

49-way dual-color crystal keys, based on LAN, MIDI, USB, 232 and other wireless communication protocols.

■ Broadcast-grade multi-channel A/B source switching :

Broadcast-grade multi-channel A/B camera switching with 8-channel current event multi-action hotkeys;

■ Mark-in preset button :

Equipped with 3 quick-set cue point buttons for -5, -10, and -20 seconds.

Specifications

Main Function	
Signal Source	8-channel A and B camera
Backlit function keys	Red and green-two colorful crystal buttons
T-BAR fader	T-type speed control handle
Jog Shuttle	4-Level Variable-Speed Jog Shuttle
Supported Software	vMix, SINSAM and other MIDI communication compatible software can be used
Control	
Control Interface	RJ45、RS232、USB
Power Supply	
Input Voltage	USB 5V
Input Current	0.15A



Rated Power	1W
Powered by USB	Support (rely on the USB power supply capability of the computer)
Others	
Environment	Indoors
Operating temperature	-25°C-60°C
Humidity environment	Less 90%
Dimensions	272*247.4*73.1mm
Weight	2KG
Material	Aluminum Alloy
Color	Black



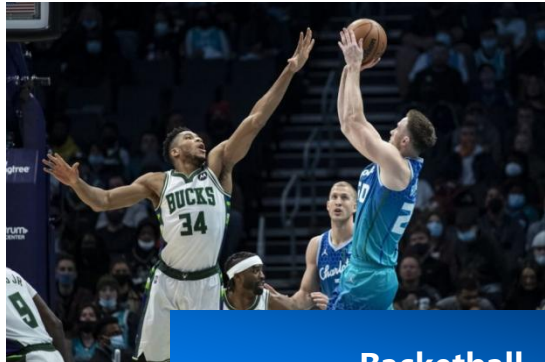
info@katovision.com

KATOV

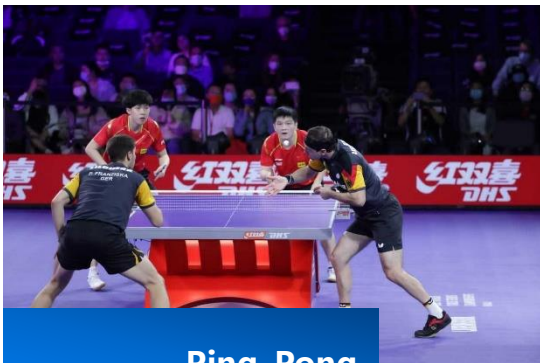
Application Scenario



Professional eSports



Basketball



Ping Pong



Soccer



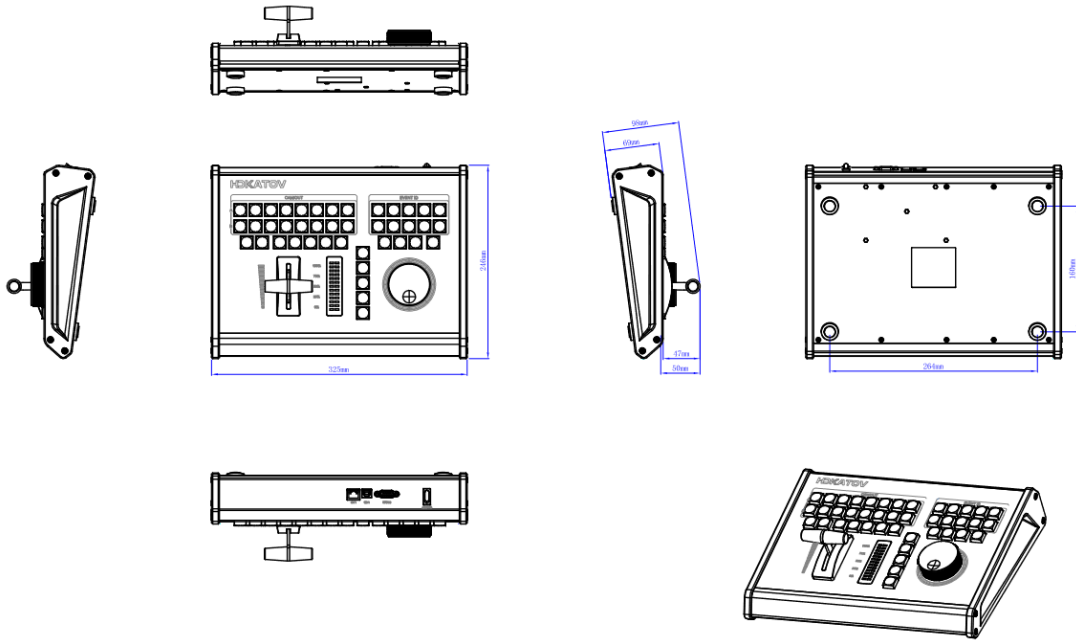
Running



Medical Imaging



Dimension wireframe



Connection diagram

